

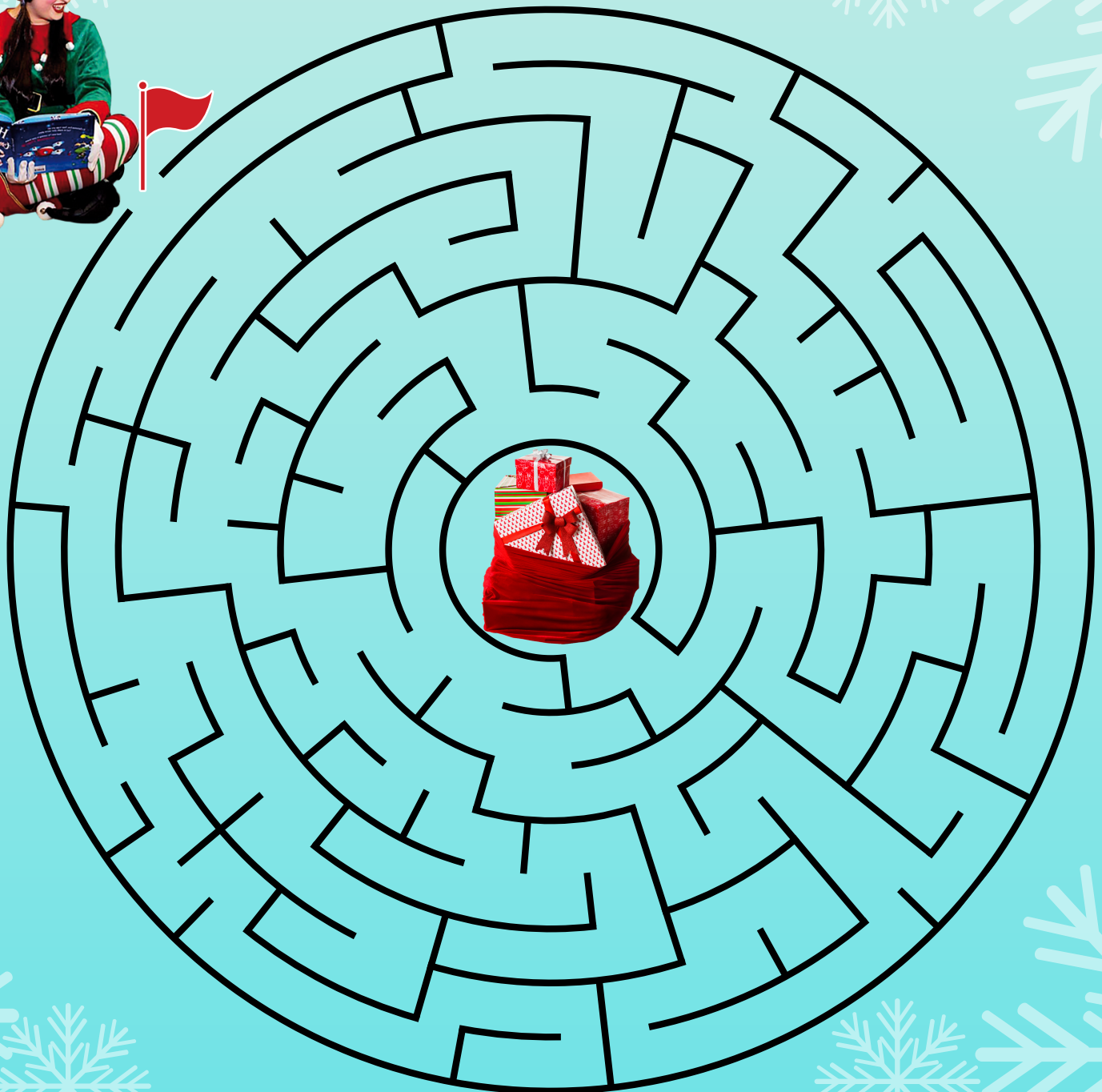
Milford
Waterfront
ACTIVITY
BOOK

Festive Fun



Milford Waterfront The Elf Maze

Find your way through the maze to help
Sparkle the Elf reach the Christmas presents!



FESTIVE JOKE!

Why does everyone love Frosty
the Snowman?
Because he was cool!

FESTIVE FACT!

If you received all the gifts from
the song "The Twelve Days of
Christmas" you would have 364
presents.



Milford Waterfront

Christmas Crossword

Use the clues to solve this festive puzzle!



ACROSS

- 4. Usually decorated at Christmas with a star or angel
- 5. What Santa travels in
- 8. A large bird traditionally eaten on Christmas Day
- 9. Santa's red nosed reindeer
- 10. Little helpers that make toys
- 12. The season Christmas is in
- 13. A large sock you put presents in

DOWN

- 1. Where Santa lives
- 2. Another word for gift
- 3. What Christmas cake is traditionally filled with
- 5. Something to ride on when it's snowing
- 6. The month Christmas is in
- 7. A popular snowman
- 11. What Santa travels down when delivering presents to a house

Milford Waterfront Winter Wordsearch

Can you find all the words?

B M O U Q V M G R R L M R S L
S N O I T A R O C E D I E L F
C H R I S T M A S K H S B O E
S T N E S E R P C C V T M R S
R E I N D E E R S A R L E A T
Y V N B Y J X G C R W E C C I
W M N L M L P R Q C P T E R V
C V L T F R Y J R T O O D O E
U O N A M W O N S U W E Y P G
H U N G J M O B O N T R E E M

CAROLS

FESTIVE

PRESENTS

CHRISTMAS

HOLLY

REINDEER

DECEMBER

MISTLETOE

SNOWMAN

DECORATIONS

NUTCRACKER

TREE

FESTIVE FACT!

The tallest cut Christmas tree stood at 221 feet in 1950 and was displayed at Northgate Shopping Center in Seattle.

FESTIVE JOKE!

What music do Santa's elves like best?
Wrap music!



Milford Waterfront Christmas Quiz

Match the question to the correct answer!

#1. What circular decoration is usually hung on doors during Christmas?

- a. Wreath**
- b. Onion**
- c. Snowball**

#2. What is Santa's last name?

- a. Barbara**
- b. Claus**
- c. Cruz**

#3. What do children usually leave for Santa on Christmas Eve with a glass of milk?

- a. Broccoli**
- b. Pumpkin**
- c. Mince Pies**

#4. What day in December is Christmas day?

- a. 31st**
- b. 25th**
- c. 5th**

#5. What red chested bird do you tend to see over Christmas time?

- a. Penguin**
- b. Flamingo**
- c. Robin**

#6. Which name isn't one of Santa's reindeer?

- a. Cupid**
- b. Jingle**
- c. Blitzen**

FESTIVE JOKE!

What do you get when you cross a snowman and a vampire?

Frostbite!

FESTIVE FACT!

The biggest Christmas cracker pull was completed by 1,478 people in 2009 at an event organised by Honda in Japan.

M
W
W

Milford Waterfront

Chocolate Krispies Reindeer

Follow the instructions to make these tasty snacks!



Ingredients...

- 4 tablespoons of butter
- 1 bag mini marshmallows (approx. 100g)
- 1 teaspoon of vanilla essence
- 6 cups of 'Coco Pops'
- 24 party pretzels
- Red and brown 'M&M'S' chocolates
- White icing

Make sure you ask a parent or adult for help!



STEP 1:

- Melt the butter and marshmallows over a medium heat.
- Once melted, stir in the vanilla essence.



STEP 2:

- Remove from heat and add the Coco Pops.
- Stir until the Coco Pops are well coated with marshmallow mixture.



STEP 3:

- Pour onto greaseproof paper on a flat surface.
- Shape into 12 triangular-shaped reindeer heads.



STEP 4:

- Allow to cool.
- Using the white icing, add the reindeers eyes and nose by sticking on the M&M'S chocolates.



STEP 5:

- Using the white icing again, break the pretzels into your desired shape and position the antlers.



Milford Waterfront

O Christmas Tree!

Decorate the tree and draw the presents you would like this year under the tree!

